

KEY WORKER HOUSING AFFORDABILITY IN SYDNEY



Loss of key workers from Sydney to outer and regional areas between 2006 and 2016

UP TO **20%**

HUNTER VALLEY



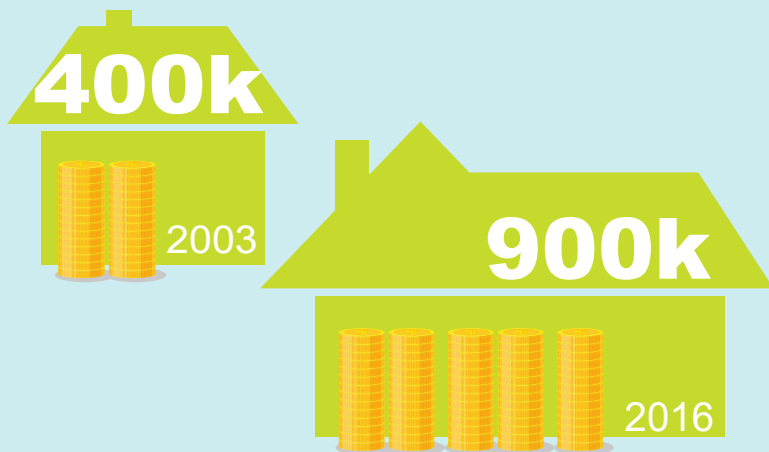
SOUTHERN HIGHLANDS
ILLAWARRA

Loss of key workers from Sydney subregions and gains in regional areas, 2006-2016

INNER SOUTH WEST	-15%
INNER WEST	-11%
EASTERN SUBURBS	-15%
RYDE	-14%
PARRAMATTA	-21%

ILLAWARRA	+11%
SOUTHERN HIGHLANDS	+17%
HUNTER VALLEY	+14%

The median price of established homes in Sydney



Number of years a key worker needs to save for a home deposit in Inner Sydney.



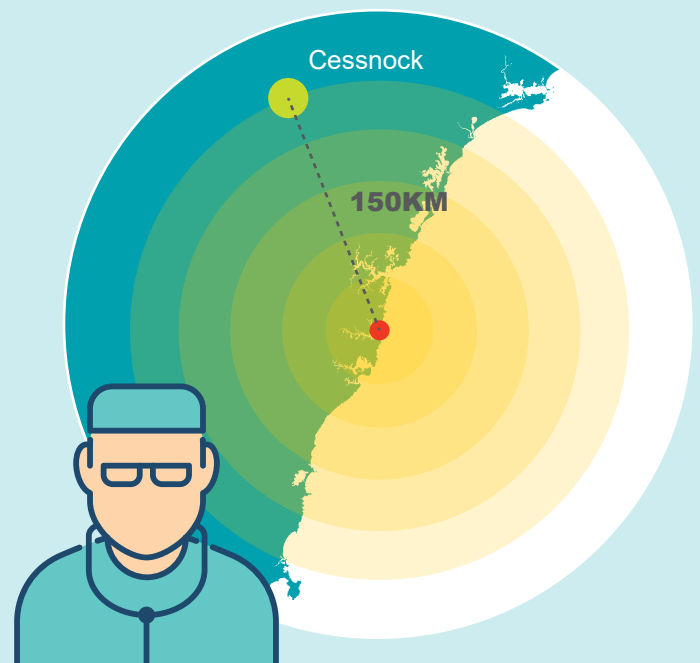
Key worker salaries.

SENIOR POLICE CONSTABLE	TEACHERS	SENIOR FIREFIGHTERS	AMBULANCE PARAMEDICS	LEVEL-5 CONSTABLES	LEVEL-5 REGISTERED NURSES	LEVEL-5 ENROLLED NURSES
\$98.4K	\$86.5K	\$83.7K	\$80K	\$73.7K	\$73K	\$57K

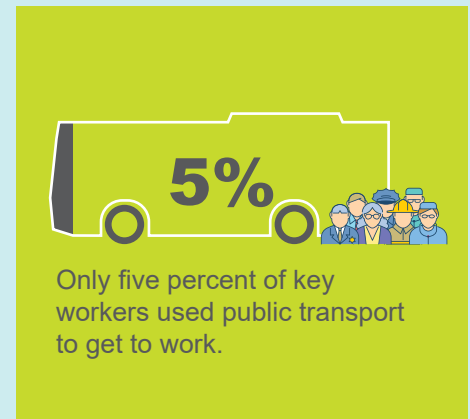
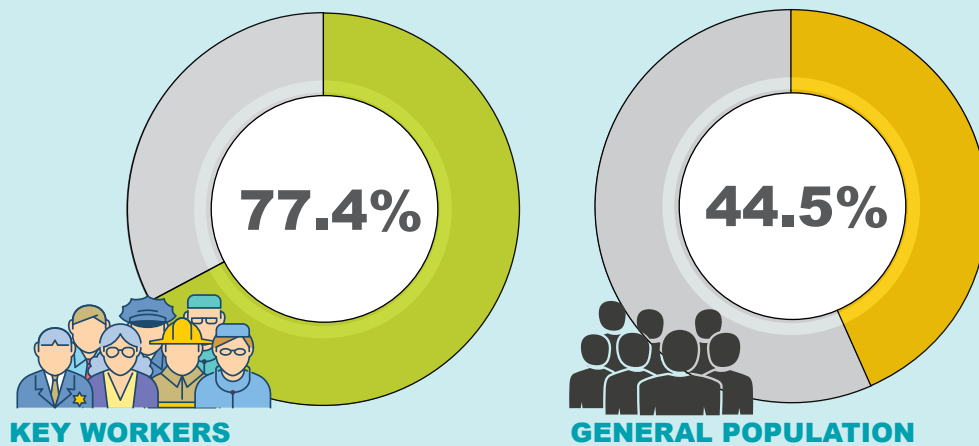


A Senior Constable on a single income can only afford to buy in 5 of 17 Outer Sydney LGAs, of which the closest to the city are Penrith and Campbelltown.

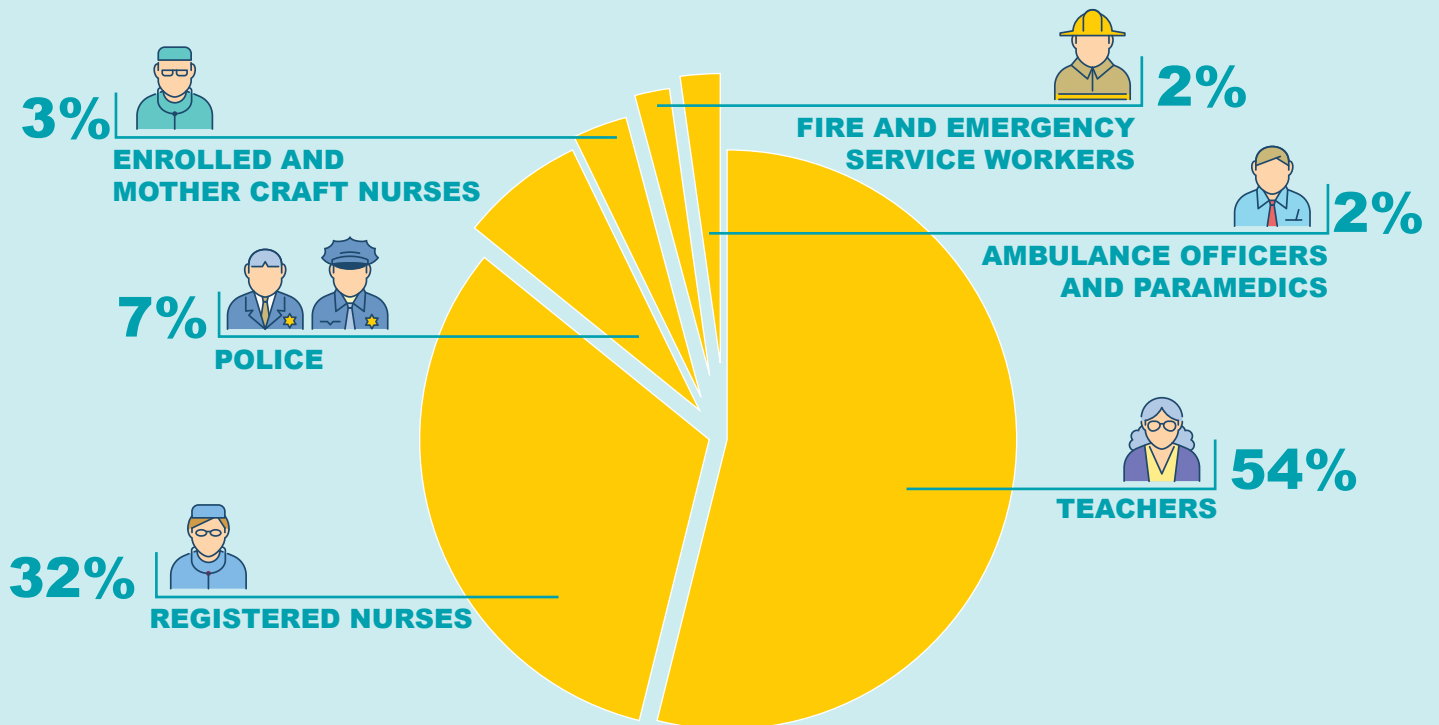
Based on 2016 median prices, an enrolled nurse (the lowest income earning key worker in sample) would only be able to purchase a median priced home in Cessnock, 150km from central Sydney.



Key workers are much more likely than the general population to commute to work by private car due to shift work and longer commute hours.



There are 156,000 key workers employed across Sydney, making up 6% of Sydney's total workforce (ABS 2016).



Percentage of key workers who own their home outright

